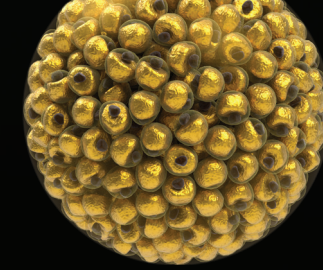


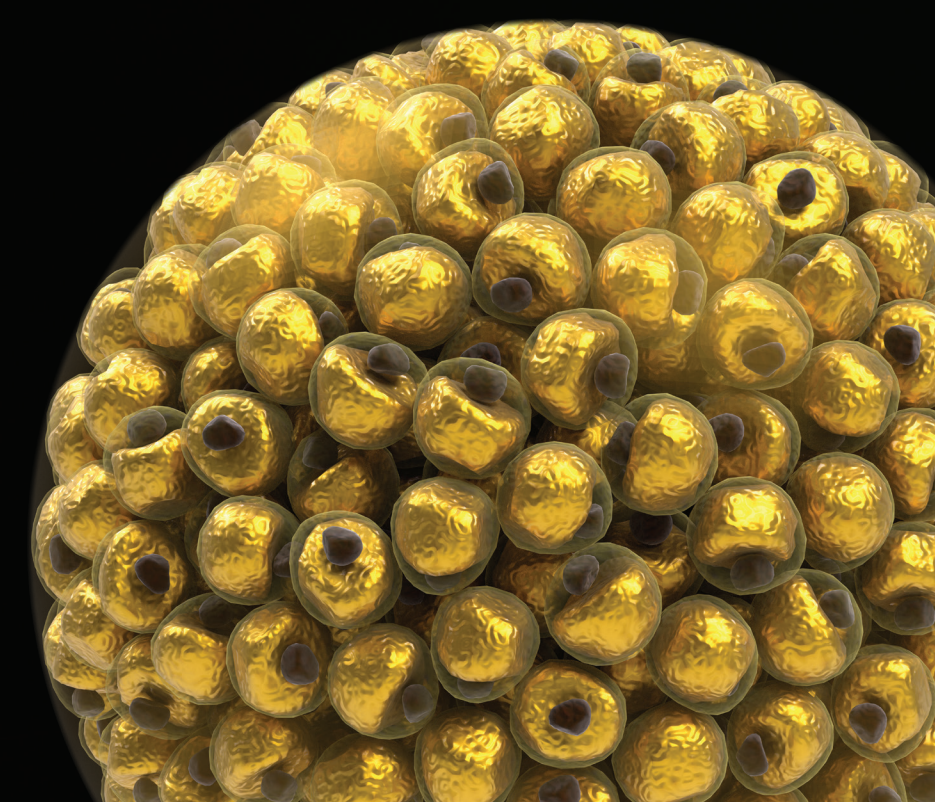
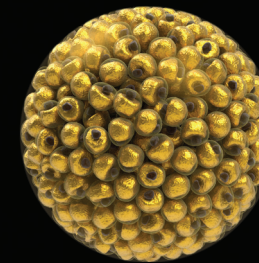
Amazing what's possible.

*Aesthetics Solutions*  
**Complete solutions for Body  
Contouring + Fat Transfer**



We proudly present

*The Workstations*  
**A holistic Solution to  
 care for viable fat cells!**



<i>Workstations</i>	04
Product information	05
<i>Vibrasat®</i>	06
Product information	09
Cannula assortment	10
Product Information	11
Consumables and Accessories	14
Commodities*	15
<i>Liposat®</i>	16
Product information	19
Consumables and Accessories	20
Commodities*	21
<i>Thermia Pro</i>	22
Product information	25
<i>Vacusat®</i>	26
Product information	29
Commodities*	30

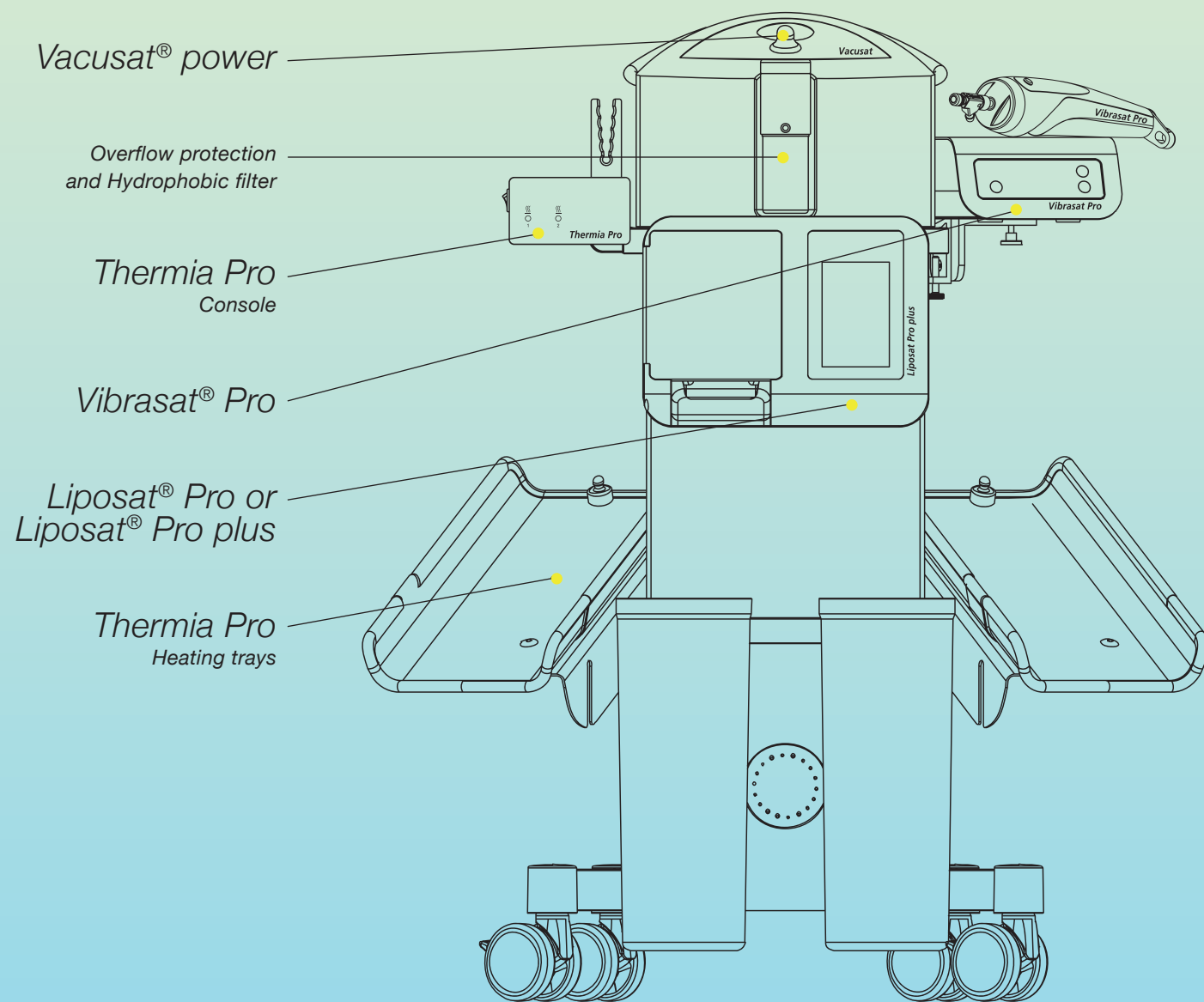
\*Not available in all countries. For more information contact our sales team.

Combining *Vibrasat® Pro*, the power-assisted liposuction device with a TLA/FAT infiltration pump, (*Liposat® Pro* or *Liposat® Pro plus*), the Anti-Hypothermia-Solution (*Thermia Pro*) and the silent surgical aspirator (*Vacusat® power*) builds the complete solution for Body Contouring.

All components are perfectly compatible and harmonised to each other, guaranteeing excellent efficiency, environmentally friendly operation and a maximum in safety for your patient.

All available safety features and accessories are included: Overflow protection, hydrophobic filter, attachment kits, and a 3-Pedal footswitch.

**Two options**  
**Workstation Pro plus**  
 Consisting of *Vibrasat® Pro*, *Liposat® Pro plus*, *Vacusat® power*, *Thermia Pro* mounted.  
**Workstation Pro**  
 Consisting of *Vibrasat® Pro*, *Liposat® Pro*, *Vacusat® power*, *Thermia Pro* mounted.





*Vibrasat® Pro*  
**MÖLLER's latest in Power-Assisted  
Liposuction technology.**



*For fatigue-free working with one of  
the most tissue-friendly technologies.*

*Technology*

Cannula movement reciprocating and linear with an approx. length of 3 mm  
Hand piece, control unit and up to two footswitches for speed control  
Cannula change without tube set removal  
3000 - 5000 strokes/minute  
Boost mode 6000 strokes/minute

*Comfort*

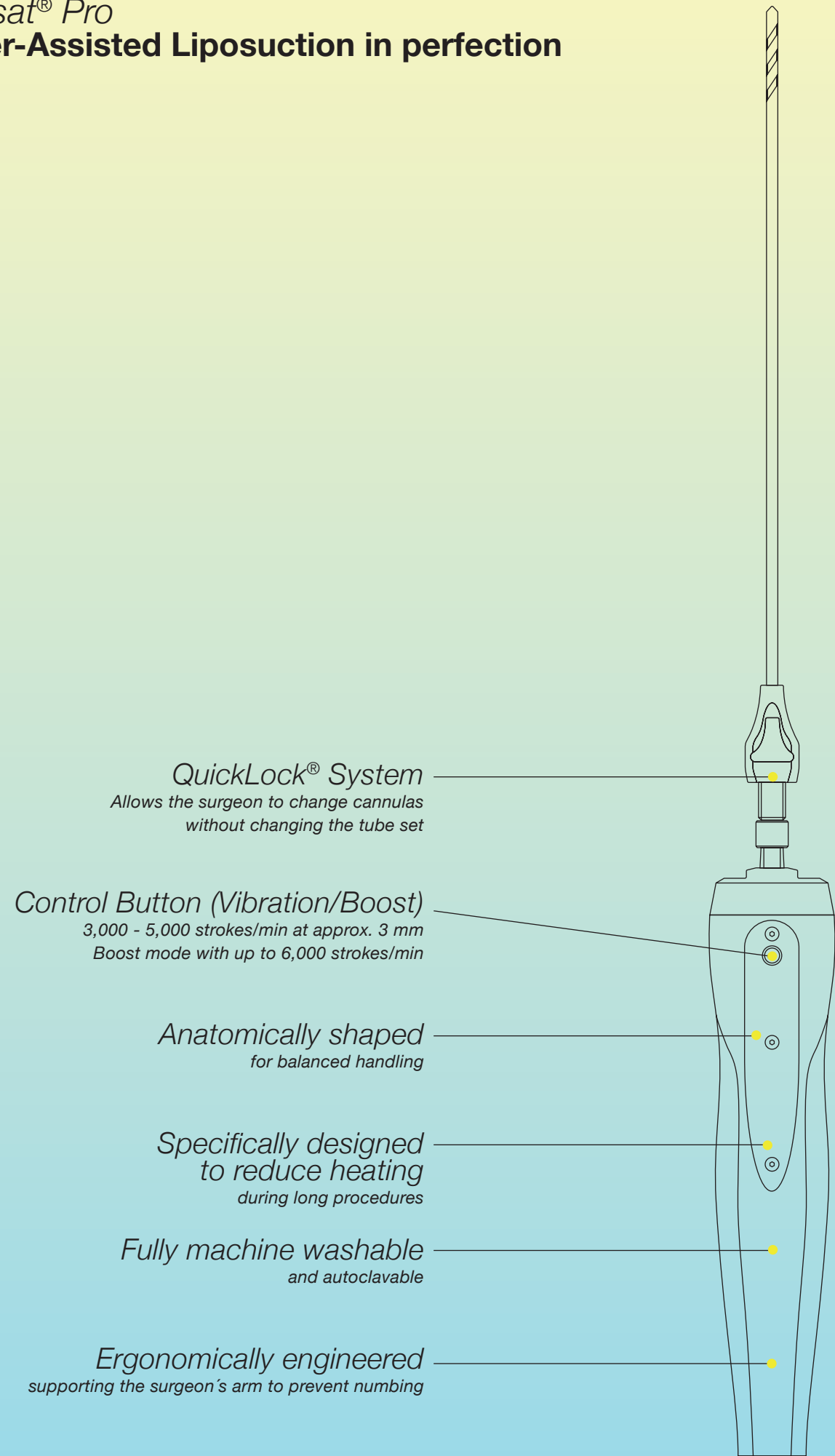
Machine cleanable and fully autoclavable  
Less heating even during long treatments  
Anatomically shaped  
Quiet and smooth operation

*Application*

Liposuction and infiltration of TLA and FAT  
Liposuction  
Lipedema treatment  
Brazilian Butt Lift  
Others



Vibrasat® Pro  
Power-Assisted Liposuction in perfection



Vibrasat® Pro  
Product Information

Vibrasat® Pro is our latest and most powerful Power-Assisted Liposuction device. The easy-to-use design significantly reduces fatigue, making it ideal for long procedures and helps professionals improving their patients outcome.

Vibrasat® Pro is ideal for every Body Contouring case. Its durable German design is made to withstand multiple procedures in the same day, reduce procedure times, and maximizing patient results. The Vibrasat® Pro QuickLock feature simplifies cannula exchange while the control button provides an extra boost of power when needed.

**Console**  
REF 00003921

**Wand**  
REF 00003922

**Technical data**

Dimension (W x H x D)	170 x 90 x 205 mm
Hand piece (dia. x L)	52 x 300 mm
Weight control unit/ hand piece	1.2 kg/ 0.7 kg
Medical device class	Ila
Stroke length	approx. 3 mm
Stroke frequency	3,000 - 6,000 /min
Power supply	100 - 240 VAC, 50 - 60 Hz



Our Cannula Portfolio.  
Are you looking for fitting  
cannulas for your surgeries?

We offer the right cannula  
for every application.



All single use  
cannulas are  
bendable!

Please follow the  
instructions in the manual.

Extraction

*Mercedes*

**360° | Medium volume | 3 ports**

The all-time classic among liposuction cannulas. Developed in cooperation with Dr. Afschin Fatemi, it is particularly suitable for treatments which require a gentle 360° multilayer harvesting.



*Double Mercedes*

**360° | Large volume | 6 ports**

Two sets of Mercedes holes in this cannula allow 360° fat aspiration and the aspiration of a larger volume in the same time.



*Triple Mercedes*

**360° | High volume | 9 ports**

Equipped with three sets of Mercedes holes this cannula is designed for large volume extraction. This arrangement allows multi-layered adipose tissue to be extracted quickly, evenly and effectively.



*Rapid Extraction*

**360° | High volume | 9 ports**

The Rapid Extraction Cannula, developed with Dr. Afschin Fatemi, offers optimal aspiration distribution across all ports of the cannula. For fast and gentle extraction of large volumes.



*Multi Rapid Extraction*

**360° | Super high volume | 15 ports**

This cannula is the right choice for debunking fat-rich tissue areas that need to be treated evenly and efficiently.



*Multi-Hole*

**360° | Small volume | 24 ports**

This cannula is ideal for harvesting fat cells for fat transplantation. It allows the removal of adipose tissue in form of small, uniform lobules. Also ideal for fine sculpting, feathering and TLA infiltration.



*Candy Cane*

**180° | Large volume | 3 ports**

Its geometrical design makes the Candy Cane Cannula ideal for large volume fat extraction in highly fibrous tissue.



*Single-Port*

**90° | Medium volume | Single port**

The Single-Port Cannula is particularly suitable for sensitive areas. The one-sided placement of the hole offers selective and direct extraction of adipose tissue.



*Tri-Port*

**90° | High volume | 3 ports**

This cannula features three holes in a row to offer the precision of the Single-Port Cannula in combination with a higher suction volume.



*Perspiratory Gland*

**270° | Manual extraction | Medium volume | 9 ports**

Due to the abrasive hole geometry this bended cannula, developed with Dr. Afschin Fatemi, is an effective way of removing sweat glands\*.



\*For a complete overview, please refer to our brochure liposuction cannulas 70002295.



Extraction and Infiltration

Basket

**360° | Super high volume | 3 ports**

Designed for large volume infiltration, pre-tunnelling, harvesting and equalisation of tissue. Available in two configurations: 1.5 cannulas are flared to 1.5 of their tube diameter. 2.0 cannulas are flared to the double of their tube diameter at the basket.



Double Basket

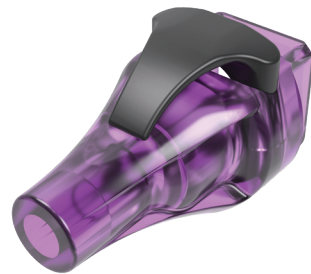
**360° | Super high volume | 6 ports**

Double Basket Cannulas have an even greater throughput than the Basket Cannulas. Available as 1.5 cannula, which is flared to 1.5 of their tube diameter at the Double Basket.



Cannula connectors

Vibrasat® Pro  
QuickLock®  
Single use



Vibrasat® Pro  
QuickLock®  
Reusable



Manual Luer-Lock Cannulas

Scar Cannula - V-shaped blade  
**90° | Manual infiltration | Luer-Lock  
| Single port | Ø 1.5 mm | (17G) |  
Length 66 mm | Single use | Sterile**

The Scar Cannula with its V-shaped blade is especially suited for the gentle cutting of connecting tissue and the injection of fat in one operation.\*\*



REF 10001181

Injection Cannula 1 - Straight  
**180° | Manual infiltration | Luer-Lock  
| Single port | Ø 1.6 mm | (16G) |  
Length 73 mm | Single use | Sterile**

This cannula is perfect for the precise infiltration of small amounts of fat. The specially developed tip, with a 180° opening, reduces the risk of injury to vessels and nerves in sensitive body regions.\*



REF 10001182

Inject Cannula 2 - Concave  
**180° | Manual infiltration | Luer-Lock  
| Single port | Ø 1.6 mm | (16G) |  
Length 73 mm | Single use | Sterile**

The Injection Cannula with its concave curved shape is ideal for injecting fat into difficult to access regions. Its tip reduces the risk of injury to vessels and nerves in sensitive body regions.\*



REF 10001183

Inject Cannula 3 - Convex  
**180° | Manual infiltration | Luer-Lock  
| Single port | Ø 1.6 mm | (16G) |  
Length 73 mm | Single use | Sterile**

This cannula is designed for optimal injecting of fat into regions that are difficult to access. The tip reduces the risk of injury to vessels and nerves in sensitive body regions.\*



REF 10001184

Removal Cannula  
**270° | Manual extraction | Luer-Lock  
| 2 ports | Ø 2.5 mm (13G) | Length  
110 mm | Single use | Sterile**

Designed for manual fat removal the open tip of this cannula allows the extraction of small amounts of fatty tissue. Can be used with syringes with Luer-Lock connector. Suitable for Stem-Cell collection.\*



REF 1000118

\* developed in cooperation with Dr. Afschin Fatemi | \*\* developed in cooperation with Dr. Luiz Toledo

Consumables and Accessories for Vibrasat®

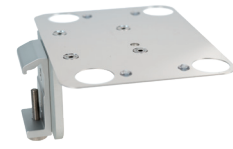
Commodities



Handpiece  
For manual liposuction  
REF 00002254



QuickLock® Connector  
For Vibrasat® Pro  
Spare part-REF 92016792



Vibrasat® Pro mounting kit  
For Vibrasat® Pro  
REF 00003973\*



Injection  
For 10 or 20 ml LL | Sterile  
10 ml REF 00002418 | 20 ml REF 00002419



3-Pedal Liposat®/  
Vibrasat® Footswitch  
For Vibrasat® power/ Pro |  
2m wire  
Spare part-REF 93003517



1-Pedal Liposat®/  
Vibrasat® Footswitch  
For Vibrasat® power/ Pro |  
2m wire  
Spare part-REF 93003545



3-Pedal Liposat®/  
Vibrasat® Footswitch  
For Vibrasat® power/ Pro |  
5m wire  
REF 00003981



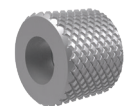
1-Pedal Liposat®/Vibrasat®  
Footswitch  
For Vibrasat® power/ Pro |  
5m wire  
REF 00003982



Locking Ring  
For Vibrasat® Pro (10 pcs.)  
Spare part-REF 93007034



O-Rings  
For Vibrasat® Pro (10 pcs.)  
Spare part-REF 93007267



Nut  
For Vibrasat®  
Pro QuickLock®  
Spare part-REF 92016794



“The cost per patient is a factor in the choice of equipment for a hospital practice. The use of the Vibrasat® for lipofilling allowed a 70% price reduction of consumable material used in comparison of our previous technique.”

The Möller Medical Vibrasat® is a versatile and complete system allowing quick, reliable, painless and cost effective surgery for large body contouring surgery and lipofilling in breast reconstruction.”

**Dr. Massimo Gianfermi**

\*Non-medical product



Liposat® Pro plus  
MÖLLER's latest  
infiltration device.



Premium solution for easy and safe  
infiltration of fat and TLA.

*Technology*

Infiltration speed adjustable  
from 50 to 1,000 ml/min

Continuous tube set and a gentle  
pump rotor for minimal shear forces,  
in order to preserve viable fat cells

Priming function for quick  
flushing of the tube set

Auto Stop Technology, pump stops  
when reaching the target volume

Connections for two footswitches

*Comfort*

Quick and easy cleaning due to  
removable rotor and smooth surfaces

Visualization of the infiltrated  
volume as well as the rotor activity

User-friendly and intuitive operation

Automated tube set insertion

*Application*

TLA infiltration for small and large volumes  
Liposuction  
Vein Stripping  
Sweat gland suction

Fat infiltration for small and large volumes  
Hand  
Face  
Brazilian Butt Lift  
Breast

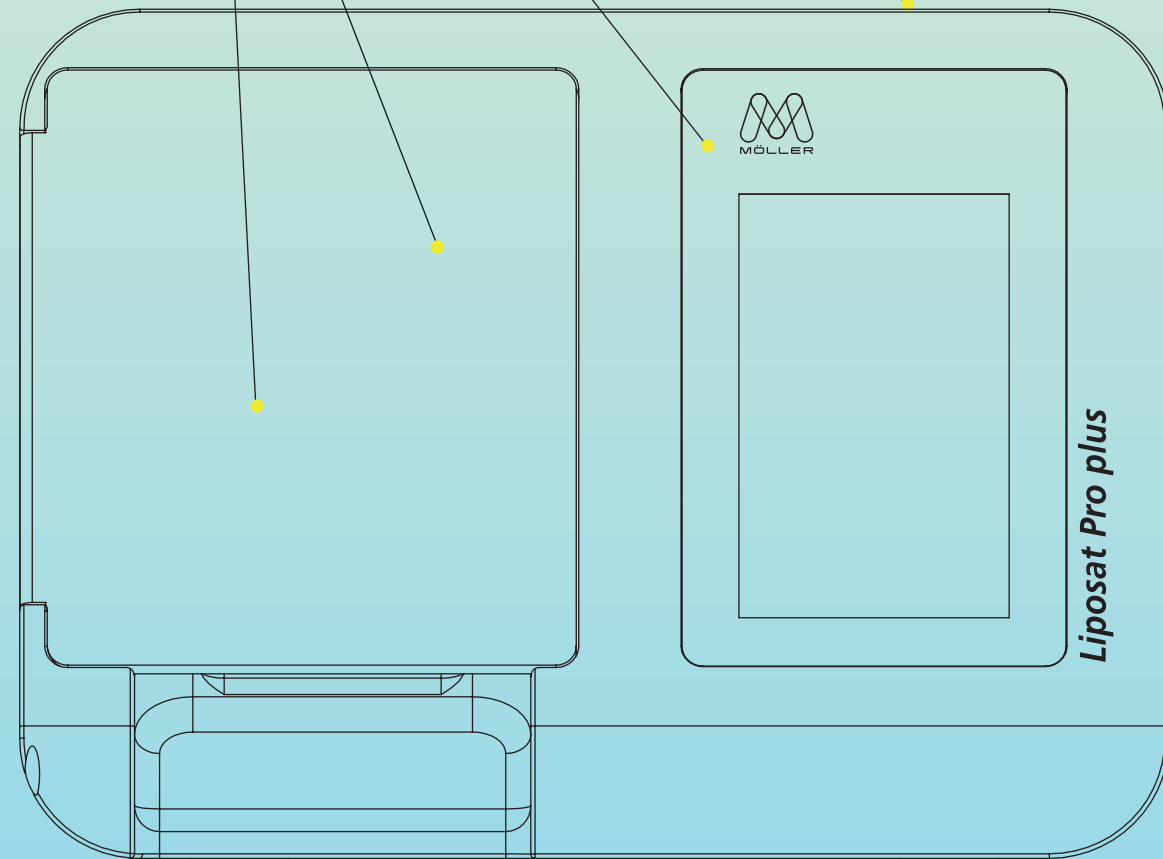
Others

FDA and CE cleared  
for FAT and TLA infiltration

Display of the  
infiltrated volume  
Intuitive operation via touch screen

Infiltration speed from  
50 to 1,000 ml/min

Gentle pump rotor  
Minimal shear forces to protect  
the valuable fat cells



REF 00003974

**Liposat® Pro plus**  
**High performance infiltration pump**

Liposat® Pro plus - Viable fat cells matter. One pump, two solutions. Liposat® Pro plus revolutionary design is made specifically for fat transfer and TLA infiltration. Optimize your workflow, safety, and comfort while reducing procedure time. Its powerful motor has a large rotor for less shear force on fat, which is ideal for users who offer fat transfer as part of their practice. The rotor is easily removed for simple and quick cleaning when necessary. Includes a 1-Pedal footswitch.

**Technical data**

Dimension (W x H x D)	275 x 210 x 350 mm
Weight	6 kg
Pumping rate	50 - 1,000 ml/min
Medical device class	IIb
Accuracy of pumping rate	±15%
Power supply	100 - 240 VAC, 50 - 60 Hz

**Liposat® Pro**  
**The reliable and efficient TLA pump**

Liposat® Pro, your solution for TLA infiltration. You can easily focus on your patient and the procedure while trusting the technology to work reliably, providing the highest level of safety and comfort. The automated tube set loader cuts down preparation time. The infiltration speed can be varied within a range of 50 to 300 ml/min. Liposat® Pro increases both efficiency and outcomes. Includes a 1-Pedal footswitch.



REF 00003977

**Technical data**

Dimension (W x H x D)	275 x 210 x 350 mm
Weight	5.8 kg
Pumping rate	50 - 300 ml/min
Medical device class	IIb
Accuracy of pumping rate	±15%
Power supply	100 - 240 VAC, 50 - 60 Hz



Consumables and Accessories for Liposat®

Commodities



Tube set  
**For Liposat® basic**  
REF 00002492



TLA Tubing Liposat®  
Pro/power  
**For Liposat® Pro/power**  
REF 00002251



TLA Tubing Liposat®  
Pro plus  
**For Liposat® Pro plus**  
REF 00002251



3-way tap  
**With 3 infusion tubes |**  
**80cm | Sterile**  
REF 00002278



5-way tap  
**With 5 infusion tubes |**  
**80cm | Sterile**  
REF 00002279



Sterican cannula  
**Sterile**  
REF 00002535



FAT Tubing Liposat®  
Pro plus  
**For Liposat® Pro plus**  
REF 00003997



TLA Luer-Lock Adapter  
**For Vibrasat® Pro**  
REF 00004027



3-Pedal Liposat®/  
Vibrasat® Footswitch  
**For Liposat® Pro/  
Pro plus | 2m wire**  
Spare part-REF 93003517



1-Pedal Liposat®/Vibrasat®  
Footswitch  
**For Liposat® power/  
Pro/ Pro plus | 2m wire**  
Spare part-REF 93003545



3-Pedal Liposat®/  
Vibrasat® Footswitch  
**For Liposat® Pro/  
Pro plus | 5m wire**  
REF 00003981



1-Pedal Liposat®/Vibrasat®  
Footswitch  
**For Liposat® power/  
Pro/ Pro plus | 5m wire**  
REF 00003982



Horizontal mounting kit  
**For Liposat® Pro/ Pro plus**  
REF 00004035\*



Vertical mounting kit  
**For Liposat® Pro/ Pro plus**  
REF 00004034\*



“Working with MÖLLER’s Liposuction devices makes my daily work routine more comfortable, increases patients safety and shortens their regeneration process after the treatment.”

**Dr. Alexander T. Hamers**

\*Non-medical product

Thermia Pro  
Helps to lower the risk  
of Hypothermia.



*Difficult to handle and space consuming devices are things of the past. Vacusat® power helps to streamline your workflows!*

*Technology*

Heating tray keeps the infiltration fluid at body temperature

Built-in temperature sensors

Connections for two heating trays

Available in two versions, as a tabletop device or for mounting on the Vacusat® power

*Comfort*

Practical mounting on the Vacusat® power or simple setup as stand-alone unit

Simple to operate with only one switch

Auto controlled

*Application*

For use in medical procedures where the heat preservation of infiltrated fluids is necessary

- Liposuction
- Lipedema treatment
- Vein stripping
- Sweat gland suction
- Abdominoplasty
- Arthroscopy

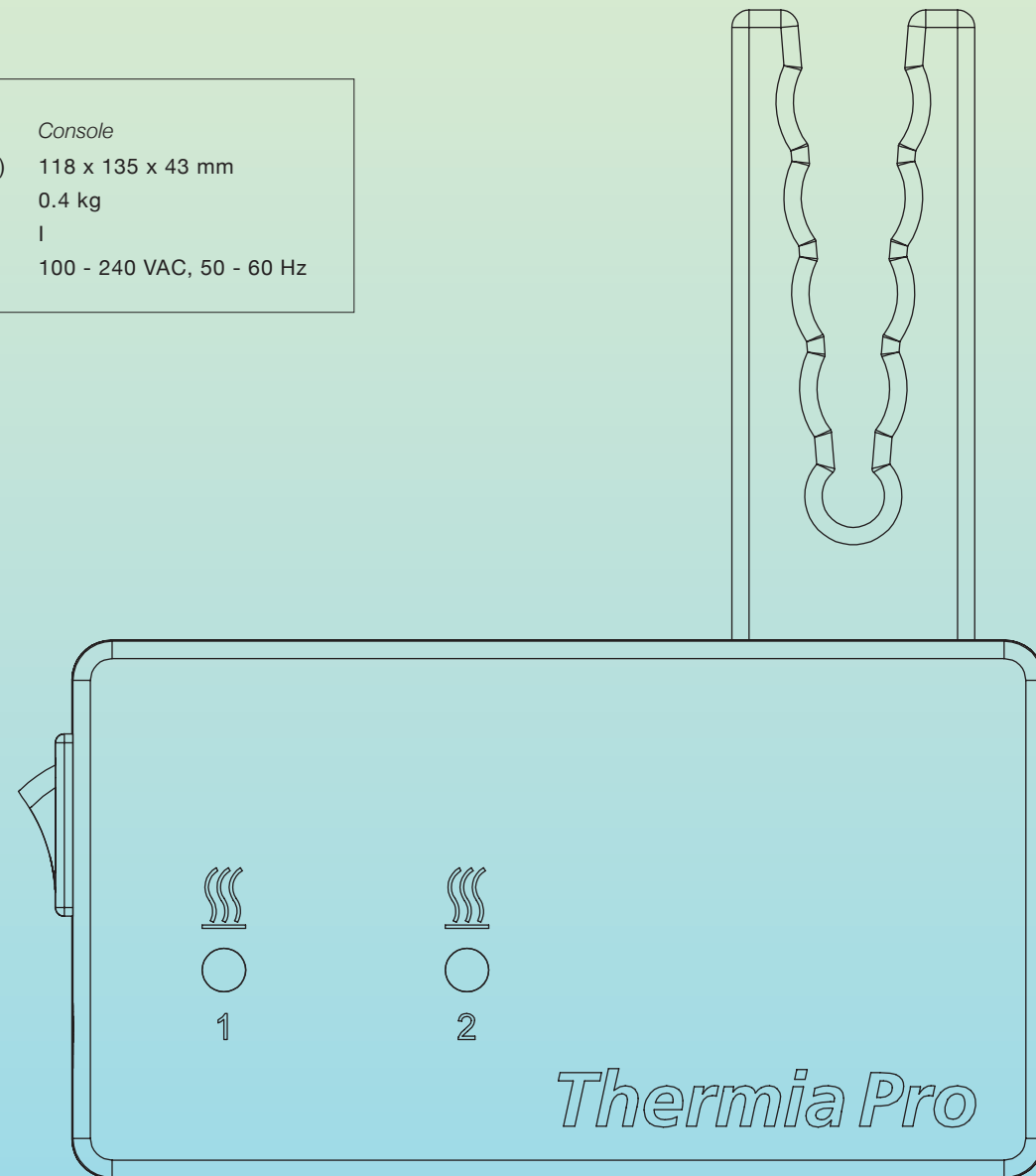
Others



*Thermia Pro Console*  
**The control unit for well-tempered TLA solution**

*Thermia Pro Console* controls the connected *Thermia Pro Heating Trays* automatically. It is easy to use and simply attachable to *Vacusat® power* or the *Thermia Pro Heating Trays* stand-alone. Using *Thermia Pro* can help to lower the risk of Hypothermia.

Technical data	Console
Dimension (W x H x D)	118 x 135 x 43 mm
Weight	0.4 kg
Medical device class	I
Power supply	100 - 240 VAC, 50 - 60 Hz



REF 00004249

*Thermia Pro Heating Trays mounted*  
**The Anti-Hypothermia-Solution attachable to Vacusat® power**

*Thermia Pro Heating Trays mounted* keep preheated TLA solution at body temperature to help to lower the risk of Hypothermia even during the longest procedures. *Thermia Pro Heating Trays mounted* consists of two Heating Trays which are attachable to the *Vacusat® power*. In combination with the *Thermia Pro Console* they can ease workflows, as they keep an eye on the infiltration temperature.



REF 00002542

**Thermia Pro mounted (Set)**

Consists of *Thermia Pro Console* and *Thermia Pro Heating Trays mounted*  
REF 00004253

*Thermia Pro Heating Trays stand-alone*  
**The independent Anti-Hypothermia-Solution**

*Thermia Pro Heating Trays stand-alone* keep preheated TLA solution at body temperature to help to lower the risk of Hypothermia even during the longest procedures. *Thermia Pro Heating Trays stand-alone* consists of two Heating Trays with an attached stand which can be placed on a table. In combination with *Thermia Pro Console* they can ease workflows, as they keep an eye on the infiltration temperature.



REF 00002286

**Thermia Pro stand-alone (Set)**

Consists of *Thermia Pro Console* and *Thermia Pro Heating Trays stand-alone*  
REF 00004255

Technical data	Heating Trays mounted	Heating Trays stand-alone
Dimension (W x H x D)	463 x 213 x 132 mm	463 x 204 x 259 mm
Weight	1.9 kg (each)	2.7 kg (each)
Medical device class	I	I
Power supply	<i>Thermia Pro Console</i>	<i>Thermia Pro Console</i>

Vacusat®  
The silent surgical aspirator



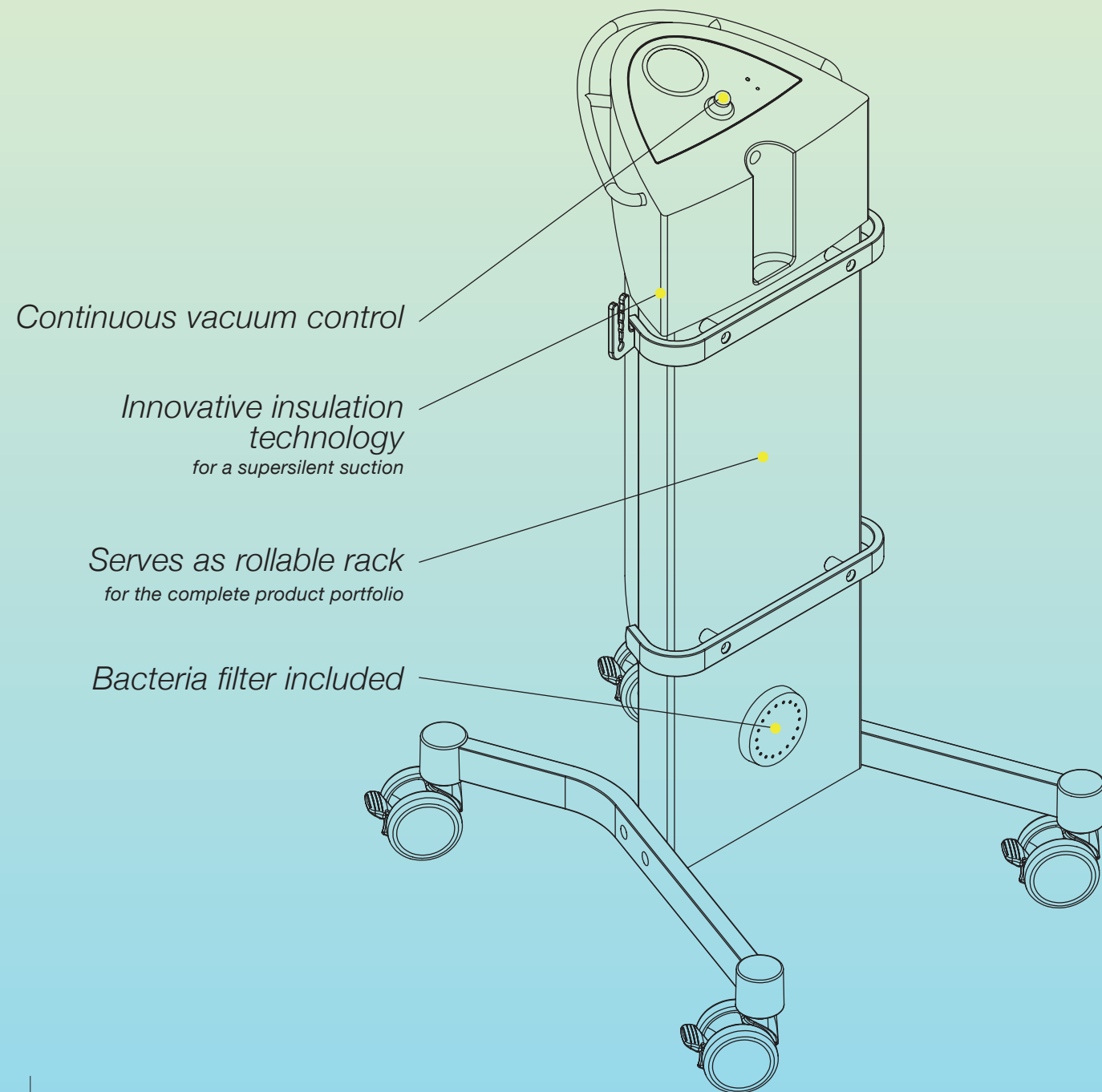
*Vacusat® power*  
**The easy working  
surgical aspirator.**



*Difficult to handle and space consuming  
devices are things of the past. Vacusat®  
power helps to streamline your workflows!*

<i>Technology</i>	<i>Comfort</i>	<i>Application</i>
Provides a vacuum of approx. -90 kPa	Serves as cart for all devices included in the Workstations	Suction of fat and body fluids Liposuction Lipedema treatment
Suction power 58 l/min (50 Hz)	Easy to operate	
Continuous vacuum control	Rollable and compact assembly	Others
Acoustic volume of 53 dB(A)		

Vacusat®  
The silent surgical aspirator



Vacusat® power  
Product information

The Vacusat® power surgical suction device is an extremely powerful piece of equipment which is both quick and simple to operate. Thanks to its innovative insulation technology, it is one of the quietest suction devices of its class.

**Following accessories  
are already included**

- Pneumatic Footswitch
- Vacuum connecting tube
- Serial tube
- Vacuum serial tube
- 2 rail clamps
- 2 containers
- 2 disposable containers
- 10 bacteria filter blades



**Technical data**

Dimension	1,000 x 500 x 560 mm
Weight	26 kg
Suction power	58 l/min ± 6 l/min at 50 Hz
Medical device class	Ila
Vacuum	-90 kPa on NN (normal null; 100 kPa = 1 Bar = 1,000 mbar)
Power supply	100 - 240 VAC, 50 - 60 Hz
Current consumption	1.1 A
Fuse	T 1.6 A H

REF 00002252



Commodities

Commodities



Vacuum connection tube  
**Silicone**  
REF 00002255



Vacuum serial tube  
**Silicone**  
REF 00002259



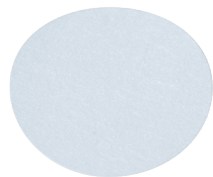
Serial tube  
**With ankle blue 287mm**  
REF 00002260



Suction tube  
**3 m | 1 funnel | Sterile**  
REF 00002264



Suction tube  
**3 m | 2 funnels | Sterile**  
REF 00002430



Filter blade  
**For Vacusat® power**  
REF 00002296



Disposable container  
**3 ltr. | green**  
REF 00002256



Rail clamp  
**For equipment rail**  
REF 00002258



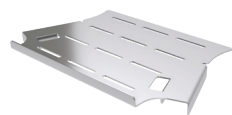
Hydrophobic filter  
**For overflow protection**  
REF 00002297



Overflow protection  
**For Vacusat® power**  
REF 00002299



Container  
**For disposable bags | 3 ltr.**  
REF 00002257



Tray  
**For Vacusat® power**  
| Spare part-REF 92018855



Vacusat® Footswitch  
**For Vacusat® power**  
REF 00002656



Vacuum Switch  
**For Vacusat® power**  
REF 00004288



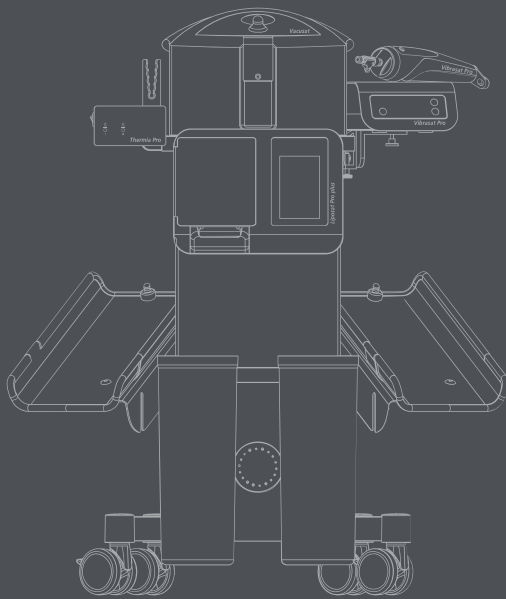
“The button on the new Vibrasat® is great and the new boost function is very beneficial for certain surgical cases.”

**Dr. Afschin Fatemi**



Moeller Medical Devices USA Inc.  
400 South Pearl Street  
Albany, NY 12202  
info@us.moeller-medical.com

Möller Medical GmbH  
Wasserkuppenstrasse 29-31  
36043 Fulda, Germany  
info@moeller-medical.com



[www.moeller-medical.com](http://www.moeller-medical.com)

REF: 70001981 09-2022 H